

Troubleshooting made easy!

Gecko's Simple Service System visual step-by-step guide!

Flashing Dots

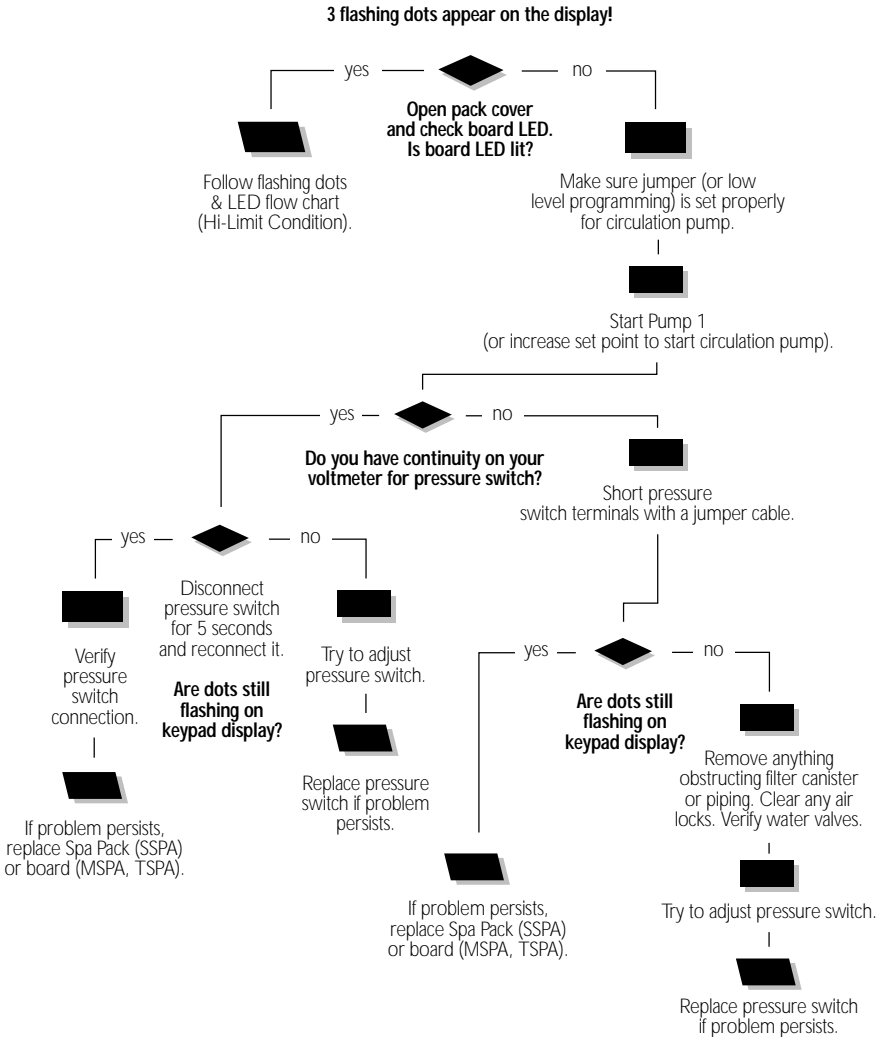
Switches

It's as simple as that!

*Sophie Tremblay, Eng.
Technical Support Group Manager
Gecko Electronics Inc.*



For systems equipped with a pressure switch:
If 3 flashing dots appear on keypad display, follow Troubleshooting Flow Chart below to identify the problem:



There must be enough water in the spa for normal operations. System may detect error condition if spa filter is dirty or if something restricts flow of water in piping.

The heater will automatically shut down when error condition occurs.

Power must remain On when the following steps are carried out.

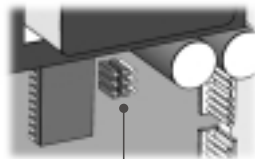
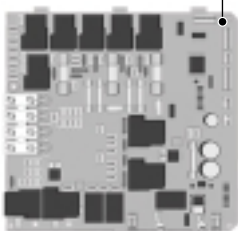
- 1 • Open pack cover.
Verify if board LED is lit.

If it is, refer to the Hi-Limit Probe troubleshooting guide.



SSPA-1 or -MP
LED indicator

TSPA-MP or MSPA-MP LED indicator



Jumpers

(SSPA)

- 2 • If LED is not lit, make sure jumper (or low level programming) is set properly for circulation pump (refer to wiring diagram inside spa cover).
- 3 • Press on **Pump 1** key to start Pump 1 (or start circ. pump by increasing set point) and test continuity on pressure switch (refer to "Output not working" section of your Service Manual if pump is not working).
- 4 • If you detect continuity, go to step #8.



(SSPA)

- 5 • If you do not detect continuity, verify if pressure switch cable is properly connected to pressure switch.

- 6• Ensure adequate water flow in the heater and short two pressure switch terminals with jumper cable.
- 7• **If the three dots disappear**, first make sure there is no blockage of water or air lock and check water valve.

If the installation is older than 2 years, replace the pressure switch and recalibrate it.

If installation is recent, try readjusting the pressure switch. If this is not possible, replace switch. (Refer to "How to Adjust the Pressure Switch" section of your Service Manual.)



- 8• If you have continuity on pressure switch, follow these steps:



(SSPA)

Disconnect pressure switch cable for 5 seconds and reconnect it.

If error condition disappears, adjust pressure switch if it is a new installation (less than two years) or replace it.

(Refer to "How to Adjust the Pressure Switch" section of your Service Manual.)

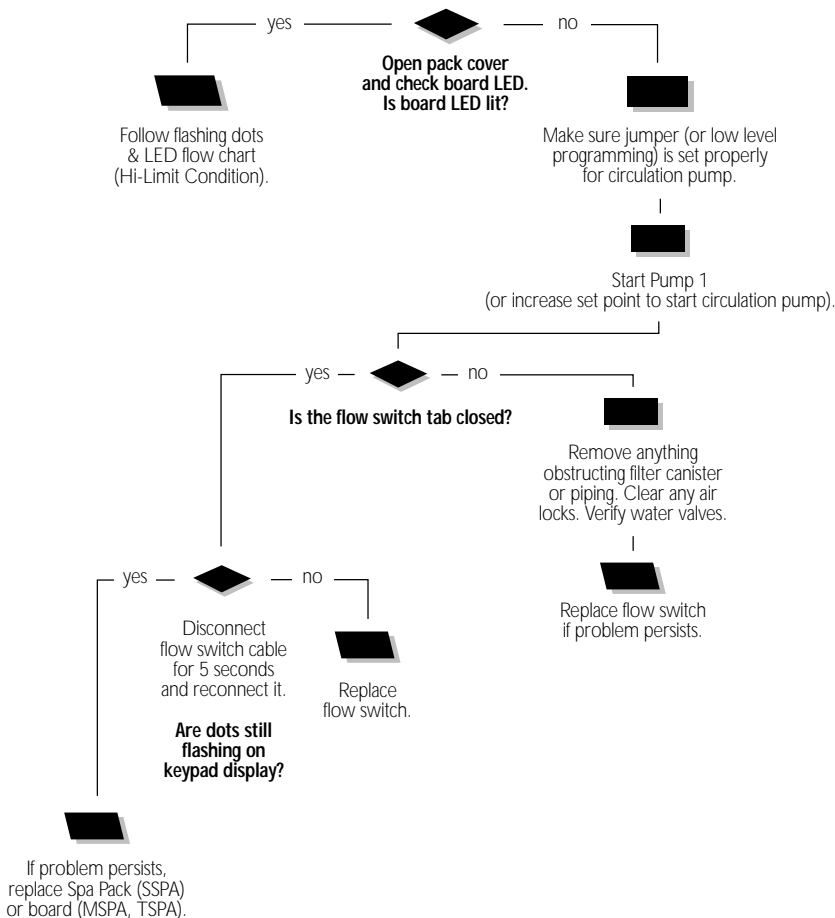
- 9• Replace Spa Pack (SSPA) or board (MSPA, TSPA) if error condition still persists.

Flashing Dots Flow Chart

Systems with Flow Switch

For systems equipped with a flow switch:
If 3 flashing dots appear on keypad display, follow Troubleshooting Flow Chart below to identify the problem:

3 flashing dots appear on the display!



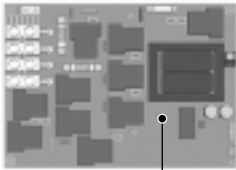
There must be enough water in the spa for normal operations. System may detect error condition if spa filter is dirty or if something restricts flow of water in piping.

The heater will automatically shut down when error condition occurs.

Power must remain On when the following steps are carried out.

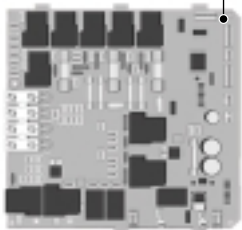
- 1• Open pack cover.
Verify if board LED is lit.

If it is, refer to the Hi-Limit Probe troubleshooting guide.



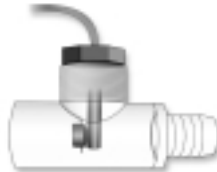
SSPA-1 or -MP
LED indicator

TSPA-MP or MSPA-MP LED indicator



- 2• If LED is not lit, make sure jumper (or low level programming) is set properly for circulation pump (refer to wiring diagram inside spa cover).

- 3• Press on **Pump 1** key to start Pump 1 (or start circ. pump by increasing set point) and verify if tab is closing in the flow switch (refer to "Output not working" section of your Service Manual if pump is not working).



- 4• If your flow switch is closed, go to step #6.



- 5• If your flow switch is opened, follow air lock procedure in spa Owner's Manual, open water valves and remove anything obstructing water flow in filter canister or piping.

-
- 6• If your flow switch is closed, disconnect flow switch cable for 5 seconds and reconnect it.

If error condition disappears,
replace flow switch.

- 7• Replace Spa Pack (SSPA) or board (MSPA, TSPA) if error condition still persists.



Gecko Electronics Inc.,
450 des Canotons, Quebec City (QC) G2E 5W6 Canada
1.800.78.GECKO, Fax: 418.872.0920, www.gecko-electronic.com

